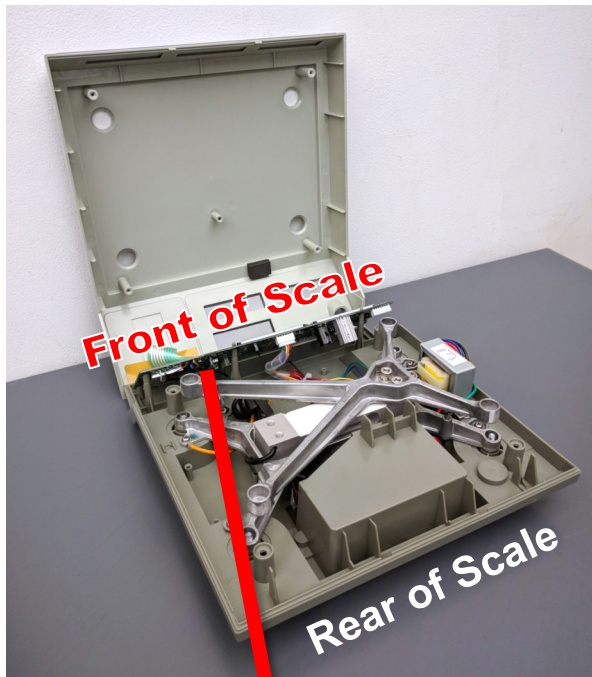


QCS Recalibration:

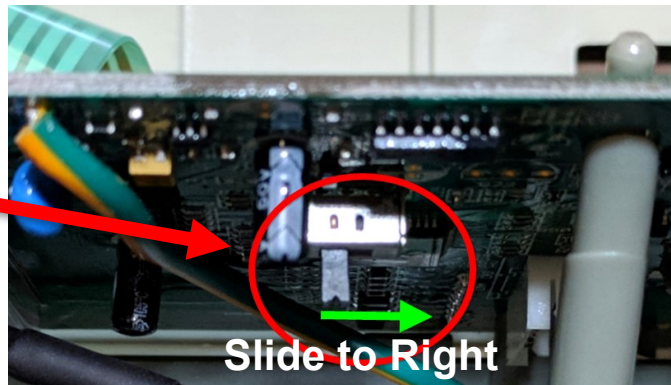
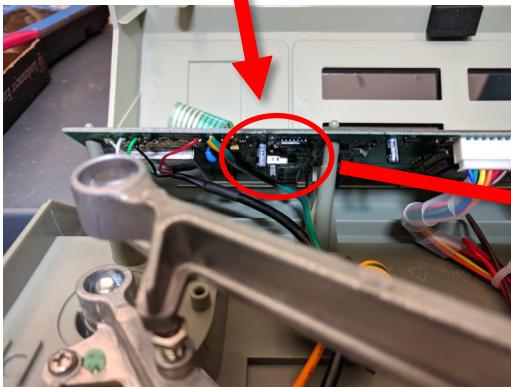
Recalibration requires the use of a certified test weight. The test weight or weights do not have to equal the weight capacity of the scale, but in total must not be less than 60% of the scale's rated capacity. The closer you can come to the scales capacity the better.

1. Turn the scale on. Confirm that the scale is set to display weight in pounds. If kilograms is displayed, press the 'kg/lb' key once to select 'lbs'. Then turn the scale off (and unplug).
2. Remove the top platter and set it aside. Turn the scale over (upside down) and completely loosen the four recessed Philips Head screws located next to each of the support feet. Now turn the entire scale body right side up. (The screws will fall out - collect them and set aside.)



3. Rotate the scale body 180 degrees so the rear of the scale is facing you. Separate the top half of the scale housing from the bottom half by lifting up the rear portion nearest you. We suggest you position the scale against a wall or other perpendicular surface so that the top housing can rest as shown in the photo. The reason is to avoid stretching and/or placing excess tension on the keyboard ribbon cable. (Alternatively you can hold the top housing vertical with your hand.)

4. Slip your pointer finger under the circuit board located toward the front right of the scale and move the small black sliding switch to the right - see photos below. Then lower the top cover down and replace the platter. (Do not insert the screws).



Continued...

5. Turn the scale on. Once the display test finishes it will display "01 csp".

- Press the "TARE" key and it will display "02 cal"

- Press the "MC" key and numbers will display.

- Press the "MC" key again and the scale will display a weight flashing in the Weight window.

6. Key in the numeric amount of the calibration weight you will be using. Place the weight or weights on scale, let them settle for about 15 seconds, and then press the "MC" key. The scale will display dashes and then the weight. Now turn the scale off.

7. Remove the platter, lift up the rear portion of the console top housing once again and slide the switch back to the original (left) position. Lower the scale top and then turn the entire scale body over and replace the four screws.

Recalibration is now complete.

Call 1-800-831-4175

For Technical Support



Email: kevinm@qtechscales.com

129 Cramer Road • Jewett, NY 12444

(518) 734-6514 • Fax: (518) 734-6497